

### FEATURES AND BENEFITS

- Accepts Chemetron/Allied®, Ohio Diamond, HillRom® Beacon Medaes, Puritan Bennett and DISS specific adapters
- Pin indexed to prevent interchangeability of gas services
- Cleaned for medical gas service
- Less than 3 psi (21 kPa) pressure drop through the outlet at 120 L/min and 50 psig (345 kPa) inlet pressure
- Inlet pipe can be rotated 360 degrees for ease of installation
- Gas specific back bodies can accept either Quick Connect or DISS front identification bodies
- Outlets can be adjusted up to 1 1/4" (32 mm) wall thickness.
- Adapters are available from Ohio Medical Corporation

### SPECIFICATIONS

The medical gas wall outlet shall be Ohio Medical Healthcair® Series. The outlets shall be UL Listed, NFPA compliant, cleaned for medical gas service and be pressure tested. Each outlet shall have less than 3 psi (21kPa) pressure drop through the outlet @ 120 l/min. and 50 psig (345 kPa) inlet pressure. For outlets providing positive pressure gas, the outlet shall be equipped with a primary and secondary check valve, the secondary check valve shall be rated for 200 psi (1,379 kPa) allowing the primary check valve to be removed for service without isolating the entire zone.

The wall outlets shall have a gas specific back body with steel mounting plate, which allows outlets to be ganged together with a center line spacing of 5" (127 mm). Each back body shall be equipped with a 6-1/2" (165 mm) length type "K" copper pipe stub which is brazed to the outlet body. The outside diameter of the copper pipe stub shall be 1/2" (12.7mm). The inlet pipe can be swiveled 360 degrees for ease of installation.

Outlet bodies shall be gas specific by means of a gas specific indexing pin arrangement. The indexing pins shall be arranged in such a way as to connect the latch-valve assembly only with the specific matching gas back body, preventing interchangeability of gas services.

The latch-valve assembly, which by means of color coding and wording, shall identify the specific medical gas service provided by the outlet and shall accept gas specific adapters.

For aesthetic appeal each outlet shall include a one piece ivory trim plate. The trim plate shall be constructed of high impact, flame retardant Cycloloy®.

The wall/ceiling outlet can accommodate various finished wall thicknesses from 3/8" (10 mm) to 1-1/4" (32 mm). Equipment is manufactured in the USA and produced in an ISO 13485 registered facility.



Diamond Compatible  
Wall Outlet



Chemetron Compatible  
Wall Outlet



DISS Wall Outlet  
DISS Ceiling Outlet



Puritan-Bennett Compatible  
Wall Outlet

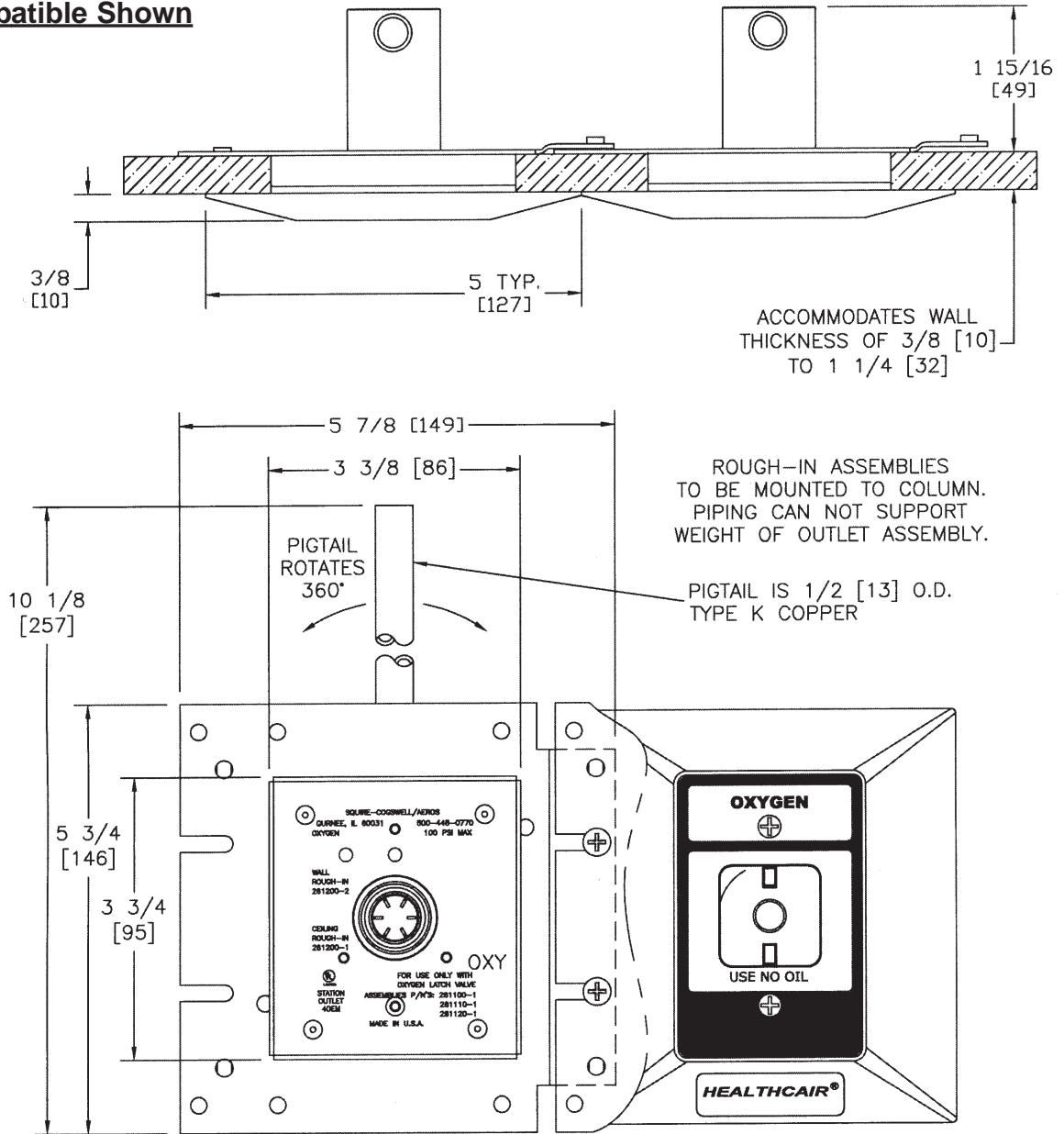


\*Rebuild Kits Available

Chemetron® is a registered trademark of Allied Healthcare Products, Inc.  
Hill-Rom® is a registered trademark of Hillenbrand Industries

Cycloloy is a registered trademark of GE Plastics.

**Diamond Compatible Shown**



<u>DESCRIPTION/ PRODUCT</u>	<u>DISS Wall</u>	<u>DISS Ceiling</u>	<u>Diamond Compatible Wall</u>	<u>Chemetron Compatible Wall</u>	<u>Puritan-Bennett Compatible Wall</u>
Oxygen	261000-1	261000-3	261010-1	261020-1	261040-1
Vacuum	261000-5	261000-7	261010-5	261020-5	261040-5
Air	261000-13	261000-15	261010-13	261020-13	N/A
Nitrous Oxide	261000-9	261000-11	261010-9	261020-9	261040-9
Evacuation	261000-21	261000-23	261010-17	261020-17	261040-13
Nitrogen	261000-17	261000-19	N/A	N/A	261040-17
Carbon Dioxide	261000-25	261000-27	N/A	N/A	N/A
Slide	261690	N/A	261690	261690	N/A

**TRUSTED BRANDS OF OHIO MEDICAL**



Ohio Medical Corporation - 1111 Lakeside Drive - Gurnee, IL 60031-4099 USA  
 TollFree:800-448-0770 - Phone: 847-855-0500 - Fax: 847-855-6300  
 www.ohiomedical.com