

Ohio Medical's Push-To-Set® Intermittent and Continuous Vacuum Regulators



Ohio Medical Corporation's Push-To-Set™ (PTS) family of vacuum regulators come with our durable, time tested, quality design you have come to know.

Clear markings show what mode the unit is in

Top mounted on/off switch for ease of use



Glow-in-the dark gauge provides visibility in low-light situations

Stat Set-Up
Intermittent mode starts in the "ON" cycle - No waiting

Smaller, sleek design for tight spaces

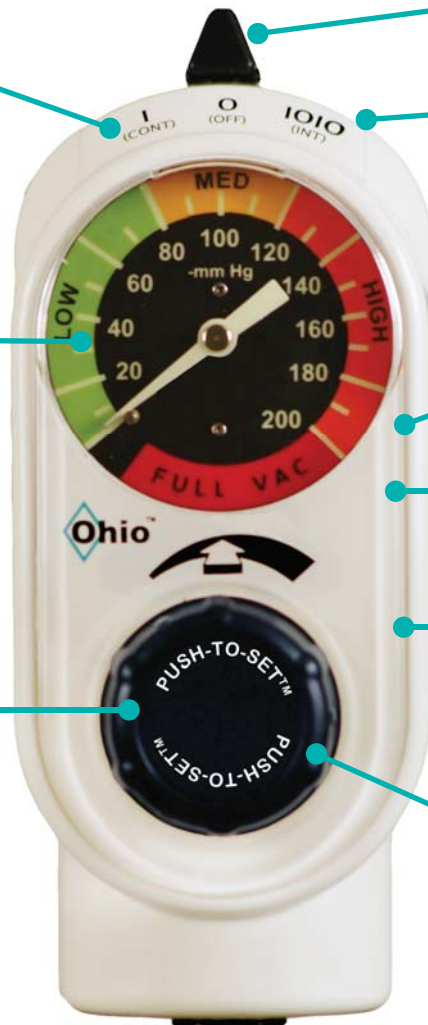
Quietest on the market

Fully adjustable timing cycles preset to 15 seconds On / 8 seconds OFF

Quick-To-Max
Only 2 turns from 0 to full wall vacuum



Patented Push-To-Set™
Built-in feature eliminates the need to occlude patient tubing to set accurate vacuum levels



Also available with a Digital Gauge
Large, easy to read display



UNMATCHED ACCURACY!
for greater safety
+/- 1% of full scale

Did You Know?

Higher than recommended suction levels are frequently set for most common suctioning procedures.

Fact: If occlude-to-set is not performed, over-suctioning may occur*

Fact: Higher than recommended suction levels may lead to tissue damage/bleeding*

Fact: Tissue tears may lead to infection*



Why PTS dramatically improves setting clinical vacuum settings

Patented Push-To-Set™ built-in feature eliminates the need to occlude patient tubing to set accurate vacuum levels



Removes a step in setting vacuum level, while ensuring greater patient safety

One simple One-handed step

*Reference Neonatal Intensive Care, May-June 2008 Issue, Article: Enhancing the Safety of Medical Suction Through Innovative Technology, by Patricia Carroll, RN, BC, CEN, RRT, MS

Push-To-Set™ Intermittent Suction Regulators (ISU) (Analog or Digital)



P/N 8700-1251-900



P/N 8700-1351-900



Technical Specifications

Safety Feature:	Push-To-Set™ Automatic occlusion device Quick-To-Max (2 turns to full wall vacuum) One hand to set vacuum level
Flow Rate:	Intermittent: Preset at 8 L/min per ASTM* Continuous: 0 to 80 L/min (without fittings at full increase)
Timing:	Easily adjustable without cover or gauge removal Silent ON/OFF switching Preset 15 seconds ON / 8 seconds OFF (± 3 seconds) Front case adjustable at bedside Begins in the "ON" mode
Vacuum Range:	0 to 200 mmHg and full wall vacuum
Gauge Display:	Analog: Glow in the dark in low or no light environments Digital: Large, easy to read display with range indicators
Gauge Accuracy:	Analog: ± 10 mmHg or $\pm 5\%$ Full Scale Deflection Digital: ± 2.0 mmHg or $\pm 1\%$ Full Scale Deflection
Battery (Digital):	Primary Lithium: 2/3AA, 3.6V, 1.6 Ah

*American Society for Testing & Materials

Push-To-Set™ Pediatric Intermittent Suction Regulators (ISU) (Analog or Digital)



P/N 8700-1271-900
Pediatric



P/N 8700-1371-900
Pediatric



P/N 8700-1372-900
Neonatal
(Available in digital only)



Technical Specifications

Safety Feature:	Push-To-Set™ Automatic occlusion device Quick-To-Max (2 turns to full wall vacuum) One hand to set vacuum level Positive Pressure Safety Relief Valve
Flow Rate:	Intermittent: preset at 8 L/min per ASTM* Continuous: 0 to 80 L/min (without fittings at full increase)
Timing:	Easily adjustable without cover or gauge removal Silent ON/OFF switching Preset 15 seconds ON / 8 seconds OFF (± 3 seconds) Front case adjustable at bedside Begins in the "ON" mode
Vacuum Range:	0 to 160 mmHg (PED) 0 to 100 mmHg (NEO)
Gauge Range:	0 to 160 mmHg (PED) 0 to 100 mmHg (NEO)
Gauge Display:	Analog: Glow in the dark in low or no light environments Digital: Large, easy to read display with range indicators
Gauge Accuracy:	Analog: ± 8 mmHg or ±5% Full Scale Deflection Digital: ± 1.6 mmHg or 1% of full scale deflection (PED) ± 1.0 mmHg or 1% of full scale deflection (NEO)
Battery (Digital):	Primary Lithium: 2/3AA, 3.6V, 1.6 Ah

Push-To-Set™ Continuous Vacuum Regulator (CVR) (Analog or Digital)



P/N 8700-1224-900



P/N 8700-1324-900



P/N 8700-1226-900



P/N 8700-1326-900

Standard Three Mode Continuous

Modes: I (On), O (OFF), MAX

Gauge: Standard (0-200 mmHg - Full Vacuum)

Color Band: Low, Medium, High & Full Vacuum

Regulated Vacuum: 0-Full Wall Vacuum

Instantaneous Full Wall Vacuum Mode

High Three Mode Continuous

Modes: I (ON), O (OFF), MAX

Gauge: High Vacuum (0-760 mmHg)

Color Band: Solid orange/variable to orange

Regulated Vacuum: 0- Full Vacuum

Instantaneous Full Wall Vacuum Mode



P/N 8700-1225-900



P/N 8700-1325-900



P/N 8700-1330-900



P/N 8700-1430-900

Standard Two Mode Continuous

Modes: I (ON), O (OFF)

Gauge: Standard (0-200 mmHg-Full Vacuum)

Color Band: Low, Medium, High & Full Vacuum

Regulated Vacuum: 0-Full Wall Vacuum

High Two Mode Continuous

Modes: I (ON), O (OFF)

Gauge: High Vacuum (0-760 mmHg)

Color Band: Solid orange/variable to orange

Regulated Vacuum: 0-Full Wall Vacuum

Push-To-Set™ Continuous Vacuum Regulator (CVR) (Analog or Digital)



P/N 8700-1231-900



P/N 8700-1331-900



P/N 8700-1234-900



P/N 8700-1334-900

Two Mode Low NEO Continuous
 Modes: I (ON), O (OFF)
 Gauge: Low Vacuum (0-100 mmHg)
 Color Band: Low, Medium, High
 Regulated Vacuum: 0-100 mmHg

Two Mode Low PED Continuous
 Modes: I (ON), O (OFF)
 Gauge: Low Vacuum (0-160 mmHg)
 Color Band: Low, Medium, High
 Regulated Vacuum: 0-130 mmHg



Technical Specifications

Safety features:	Push-To-Set™ passive, safe vacuum level selection Quick to Max - 2 turns or less to full wall vacuum resuscitation One hand to set vacuum level correctly and safely Negative Pressure Safety Relief Valve (NEO & PED Units)
Gauge Accuracy:	Analog: ±5% full scale deflection Digital: ±1% of full scale deflection or 0-100 Gauge: ±1.0 mmHg 0-160 Gauge: ± 1.6 mmHg 0-200 Gauge: ± 2.0 mmHg 0-760 Gauge: ± 7.6 mmHg
Vacuum Range:	0-100 mmHg (NEO); 0-130 mmHg (PED); 0-200 mmHg and up to full wall vacuum (Standard); 0-760 mmHg (High)
Gauge Display:	Analog: Glow in the dark in low or no light environments Digital: Large, easy to read display
Flow Rate:	Adult: 0-80 Lpm without fittings at full increase Low NEO/PED: 0-50 Lpm without fittings at full increase
Battery:	Primary Lithium 2/3AA, 3.6V, 1.6 Ah

Color Coding Labels

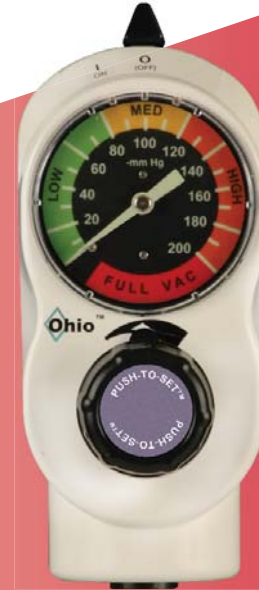
Color Code your Push-To-Set™ ISU or CVR Vacuum Regulators.

A solution for labeling your regulators to show department ownership or special clinical applications.

Can be used on either Analog or Digital Regulators



Intermittent Suction Unit



Continuous Vacuum Regulator



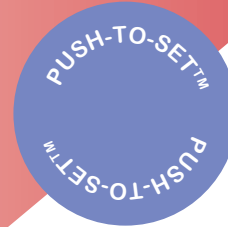
8700-0010-101
GOLD
(5 labels/order)



8700-0010-102
PEACH
(5 labels/order)



8700-0010-103
WATERMELON
(5 labels/order)



8700-0010-104
PURPLE
(5 labels/order)



8700-0010-105
TEAL
(5 labels/order)



8700-0010-106
BLUE
(5 labels/order)



8700-0010-107
LIGHT GRAY
(5 labels/order)



8700-0010-108
PINK
(5 labels/order)



8700-0010-109
LIME
(5 labels/order)



8700-0010-110
DARK GRAY
(5 labels/order)

Color Coding

Color Code your Push-To-Set™ Digital ISU or CVR Vacuum Regulators. A solution for labeling your regulators to show department ownership or special clinical applications. Color cases are only available with a digital gauge.



Blue



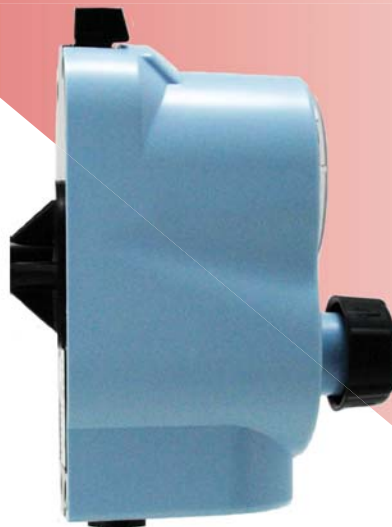
Yellow



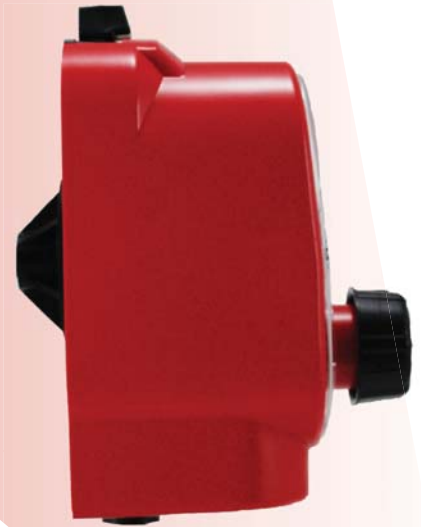
Purple



Pink



Lt. Blue



Red

Additional colors are available for an additional charge. Please contact inside sales at 866-549-6446, Option 1

Ordering Matrix - Intermittent Suction Unit

87 XX - XXXX - 9 XX

Push-To-Set™ Series

Adapter (vacuum source connection)

No Adapter with 1/8" NPT Female	00
Ohio Diamond	01
DISS Hand-I-Twist (HIT)	02
DISS Nut & Gland	03
Schrader	04
Chemetron Rectangle Striker (NCG)	05
Puritan-Bennett	07
O.E.S. Twist	08
O.E.S. MedStar	09
90° Tubing Nipple	11

Fittings (patient connection)

No Fitting 1/8" NPT Female	00
Tubing Nipple	01
Locking Gland	04
Locking Gland & Overflow Safety Trap	05
DISS Male	07
DISS Male & Overflow Safety Trap, DISS Wing Nut & Gland	08
Pole Mount Bracket with Locking Gland & Overflow Safety Trap	28
Pole Mount Bracket with Tubing Nipple	29

Vacuum Regulator Type

Analog:

Intermittent Suction Unit	*1251
Pediatric Intermittent Suction Unit	1271

Digital:

Intermittent Suction Unit	1351
Pediatric Intermittent Suction Unit	1371
Neonatal Intermittent Suction Unit	1372

*MR Conditional

Digital PTS Regulators	Yellow	Blue	Pink	Red	Lt. Blue	Purple
Intermittent Suction Unit	1451	1551	1651	1751	1851	1951
Intermittent Suction Unit/Pediatric	1471	1571	1671	1771	1871	1971
Intermittent Suction Unit/Neonatal	1472	1572	1672	1772	1872	1972

Overflow Safety Traps and Filters

Overflow Safety Traps



Overflow Safety Trap with Locking Gland
6700-0365-901



Overflow Safety Trap with Hand-I-Twist (HIT)
6702-0365-901




Overflow Safety Trap with DISS Wing Nut & Gland
6703-0365-901



Overflow Safety Trap with DISS Male Adapter
6714-0365-901


Filters



Tubing x Tubing nipple

Package of 10
Package of 50

6730-0571-800
6730-0572-800



1/8" NPT Threaded x Tubing nipple

Package of 10
Package of 50

6730-0581-800
6730-0582-800

Ordering Matrix - Continuous Vacuum Regulator

87 XX - XXXX - 9 XX

Push-To-Set™ Series

Adapter (vacuum source connection)

No Adapter with 1/8" NPT Female	00
Ohio Diamond	01
DISS Hand-I-Twist (HIT)	02
DISS Nut & Gland	03
Schrader	04
Chemetron Rectangle Striker (NCG)	05
Puritan-Bennett	07
O.E.S. Twist	08
O.E.S. MedStar	09
90° Tubing Nipple	11

Fittings (patient connection)

No Fitting 1/8" NPT Female	00
Tubing Nipple	01
Locking Gland	04
Locking Gland & Overflow Safety Trap	05
DISS Male	07
DISS Male & Overflow Safety Trap, DISS Wing Nut & Gland	08
Pole Mount Bracket with Locking Gland & Overflow Safety Trap	28
Pole Mount Bracket with Tubing Nipple	29

Vacuum Regulator Type

<u>Analog:</u>	
3-Mode Continuous Vacuum Regulator	*1224
2-Mode Continuous Vacuum Regulator	*1225
3-Mode High Continuous Vacuum Regulator	*1226
2-Mode High Continuous Vacuum Regulator	*1330
2-Mode Neonatal Continuous Vacuum Regulator	1231
2-Mode Pediatric Continuous Vacuum Regulator	1234
<u>Digital:</u>	
3-Mode Continuous Vacuum Regulator	1324
2-Mode Continuous Vacuum Regulator	1325
3-Mode High Continuous Vacuum Regulator	1326
2-Mode High Continuous Vacuum Regulator	1430
2-Mode Neonatal Continuous Vacuum Regulator	1431
2-Mode Pediatric Continuous Vacuum Regulator	1434

*MR Conditional

Digital PTS Regulators	Yellow	Blue	Pink	Red	Lt. Blue	Purple
3-Mode Standard CVR	1424	1524	1624	1724	1824	1924
3-Mode High CVR	1426	1526	1626	1726	1826	1926
2-Mode Standard CVR	1425	1525	1625	1725	1825	1925
2-Mode High CVR	1530	1630	1730	1830	1930	2030
2-Mode NEO(0-100mmHg) CVR	1431	1531	1631	1731	1831	1931
2-Mode PED (0-160mmHg) CVR	1434	1534	1634	1734	1834	1934



Suction & Oxygen Therapy Devices
Portable Suction Machines
Medical Gas Pipeline Equipment
Vacuum & Air Compressor Packages and Accessories

Ask about our clinical excellence program



clinical excellence program

Part 1: Clinical Animation Video
"Avoiding the hazards of inadvertent
administration of high suction pressures"

Part 2: Clinical Video
Understanding the Hazards of oversuctioning

Both videos can be viewed on our website: www.ohiomedical.com



1111 Lakeside Drive, Gurnee, IL 60031
866-549-6446 - Fax: 847-855-6218
www.ohiomedical.com

P/N 255419 Rev.3 (11/2009)