

Ohio Medical's Push-To-Set® Intermittent and Continuous Vacuum Regulators



Ohio Medical Corporation's Push-To-Set™ (PTS) family of vacuum regulators come with our durable, time tested, quality design you have come to know.

Clear markings show what mode the unit is in

Top mounted on/off switch for ease of use



Glow-in-the dark gauge provides visibility in low-light situations

Stat Set-Up
Intermittent mode starts in the "ON" cycle - No waiting

Smaller, sleek design for tight spaces

Quietest on the market

Fully adjustable timing cycles preset to 15 seconds On / 8 seconds OFF

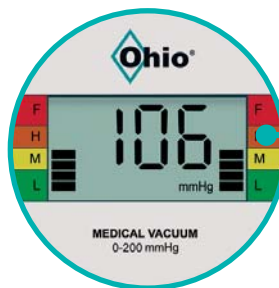
Quick-To-Max
Only 2 turns from 0 to full wall vacuum



Patented Push-To-Set™
Built-in feature eliminates the need to occlude patient tubing to set accurate vacuum levels



Also available with a Digital Gauge
Large, easy to read display



UNMATCHED ACCURACY!
for greater safety
+/- 1% of full scale

Did You Know?

Higher than recommended suction levels are frequently set for most common suctioning procedures.

Fact: If occlude-to-set is not performed, over-suctioning may occur*

Fact: Higher than recommended suction levels may lead to tissue damage/bleeding*

Fact: Tissue tears may lead to infection*



Why PTS dramatically improves setting clinical vacuum settings

Patented Push-To-Set™ built-in feature eliminates the need to occlude patient tubing to set accurate vacuum levels



Removes a step in setting vacuum level, while ensuring greater patient safety

One simple One-handed step

*Reference Neonatal Intensive Care, May-June 2008 Issue, Article: Enhancing the Safety of Medical Suction Through Innovative Technology, by Patricia Carroll, RN, BC, CEN, RRT, MS

Push-To-Set™ Adult Intermittent Suction Regulators (ISU) (Analog or Digital)



8700-1251-900
Adult



8700-1351-900
Adult



Technical Specifications

Safety Feature:	Push-To-Set™ Automatic occlusion device Quick-To-Max (2 turns to full wall vacuum) One hand to set vacuum level
Flow Rate:	Intermittent: Preset at 8 L/min per ASTM* Continuous: 0 to 80 L/min (without fittings at full increase)
Timing:	Easily adjustable without cover or gauge removal Silent ON/OFF switching Preset 15 seconds ON / 8 seconds OFF (± 3 seconds) Front case adjustable at bedside Begins in the "ON" mode
Vacuum Range:	0 to 200 mmHg and full wall vacuum
Gauge Display:	Analog: Glow in the dark in low or no light environments Digital: Large, easy to read display with range indicators
Gauge Accuracy:	Analog: ± 10 mmHg or $\pm 5\%$ Full Scale Deflection Digital: ± 2.0 mmHg or $\pm 1\%$ Full Scale Deflection
Battery (Digital):	Primary Lithium: 2/3AA, 3.6V, 1.6 Ah

*American Society for Testing & Materials

Push-To-Set™ Pediatric/Neonatal Intermittent Suction Regulators (ISU) (Analog or Digital)



8700-1271-900
Pediatric



8700-1371-900
Pediatric



8700-1279-900
Neonatal



8700-1372-900
Neonatal



Technical Specifications

Safety Feature:	Push-To-Set™ Automatic occlusion device Quick-To-Max (2 turns to full wall vacuum) One hand to set vacuum level Positive Pressure Safety Relief Valve
Flow Rate:	Intermittent: preset at 8 L/min per ASTM* Continuous: 0 to 80 L/min (without fittings at full increase)
Timing:	Easily adjustable without cover or gauge removal Silent ON/OFF switching Preset 15 seconds ON / 8 seconds OFF (± 3 seconds) Front case adjustable at bedside Begins in the "ON" mode
Vacuum Range:	0 to 160 mmHg (PED) 0 to 100 mmHg (NEO)
Gauge Range:	0 to 160 mmHg (PED) 0 to 100 mmHg (NEO)
Gauge Display:	Analog: Glow in the dark in low or no light environments Digital: Large, easy to read display with range indicators
Gauge Accuracy:	Analog: ± 8 mmHg or ±5% Full Scale Deflection Digital: ± 1.6 mmHg or 1% of full scale deflection (PED) ± 1.0 mmHg or 1% of full scale deflection (NEO)
Battery (Digital):	Primary Lithium: 2/3AA, 3.6V, 1.6 Ah

Push-To-Set™ Adult Continuous Vacuum Regulator (CVR) (Analog or Digital)



8700-1224-900
Adult



8700-1324-900
Adult



8700-1226-900
Adult



8700-1326-900
Adult

Standard Three Mode Continuous

Modes: I (On), O (OFF), MAX
Gauge: Standard (0-200 mmHg - Full Vacuum)
Color Band: Low, Medium, High & Full Vacuum
Regulated Vacuum: 0-Full Wall Vacuum
Instantaneous Full Wall Vacuum Mode

High Three Mode Continuous

Modes: I (ON), O (OFF), MAX
Gauge: High Vacuum (0-760 mmHg)
Color Band: Solid orange/variable to orange
Regulated Vacuum: 0- Full Vacuum
Instantaneous Full Wall Vacuum Mode



8700-1225-900
Adult



8700-1325-900
Adult



8700-1330-900
Adult



8700-1430-900
Adult

Standard Two Mode Continuous

Modes: I (ON), O (OFF)
Gauge: Standard (0-200 mmHg-Full Vacuum)
Color Band: Low, Medium, High & Full Vacuum
Regulated Vacuum: 0-Full Wall Vacuum

High Two Mode Continuous

Modes: I (ON), O (OFF)
Gauge: High Vacuum (0-760 mmHg)
Color Band: Solid orange/variable to orange
Regulated Vacuum: 0-Full Wall Vacuum

Push-To-Set™ Pediatric/Neonatal Continuous Vacuum Regulator (CVR)(Analog or Digital)



8700-1231-900
Neonatal



8700-1331-900
Neonatal



8700-1234-900
Pediatric



8700-1334-900
Pediatric

Two Mode Low NEO Continuous
 Modes: I (ON), O (OFF)
 Gauge: Low Vacuum (0-100 mmHg)
 Color Band: Low, Medium, High
 Regulated Vacuum: 0-100 mmHg

Two Mode Low PED Continuous
 Modes: I (ON), O (OFF)
 Gauge: Low Vacuum (0-160 mmHg)
 Color Band: Low, Medium, High
 Regulated Vacuum: 0-130 mmHg



Technical Specifications

Safety features:	Push-To-Set™ passive, safe vacuum level selection Quick to Max - 2 turns or less to full wall vacuum resuscitation One hand to set vacuum level correctly and safely Negative Pressure Safety Relief Valve (NEO & PED Units)
Gauge Accuracy:	Analog: ±5% full scale deflection Digital: ±1% of full scale deflection or 0-100 Gauge: ±1.0 mmHg 0-160 Gauge: ± 1.6 mmHg 0-200 Gauge: ± 2.0 mmHg 0-760 Gauge: ± 7.6 mmHg
Vacuum Range:	0-100 mmHg (NEO); 0-130 mmHg (PED); 0-200 mmHg and up to full wall vacuum (Standard); 0-760 mmHg (High)
Gauge Display:	Analog: Glow in the dark in low or no light environments Digital: Large, easy to read display
Flow Rate:	Adult: 0-80 Lpm without fittings at full increase Low NEO/PED: 0-50 Lpm without fittings at full increase
Battery:	Primary Lithium 2/3AA, 3.6V, 1.6 Ah

Color Coding Labels

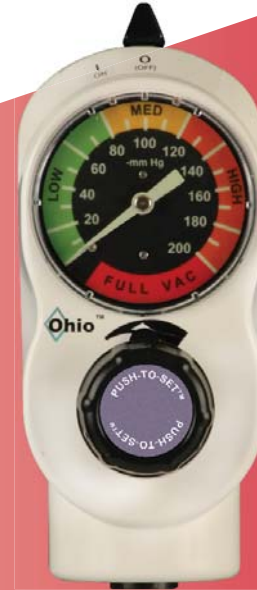
Color Code your Push-To-Set™ ISU or CVR Vacuum Regulators.

A solution for labeling your regulators to show department ownership or special clinical applications.

Can be used on either Analog or Digital Regulators



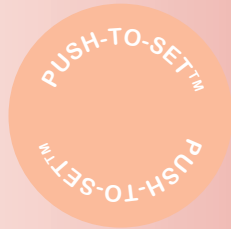
Intermittent Suction Unit



Continuous Vacuum Regulator



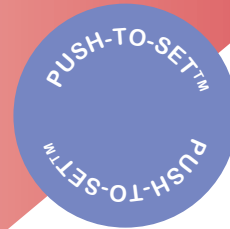
8700-0010-101
GOLD
(5 labels/order)



8700-0010-102
PEACH
(5 labels/order)



8700-0010-103
WATERMELON
(5 labels/order)



8700-0010-104
PURPLE
(5 labels/order)



8700-0010-105
TEAL
(5 labels/order)



8700-0010-106
BLUE
(5 labels/order)



8700-0010-107
LIGHT GRAY
(5 labels/order)



8700-0010-108
PINK
(5 labels/order)



8700-0010-109
LIME
(5 labels/order)



8700-0010-110
DARK GRAY
(5 labels/order)

Color Coding

Color Code your Push-To-Set™ Digital ISU or CVR Vacuum Regulators.
A solution for labeling your regulators to show department ownership or special clinical applications.
Color cases are only available with a digital gauge.



Blue



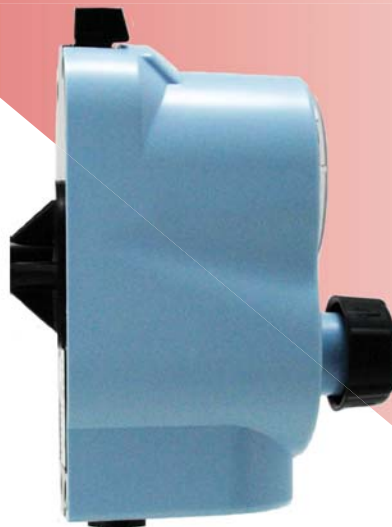
Yellow



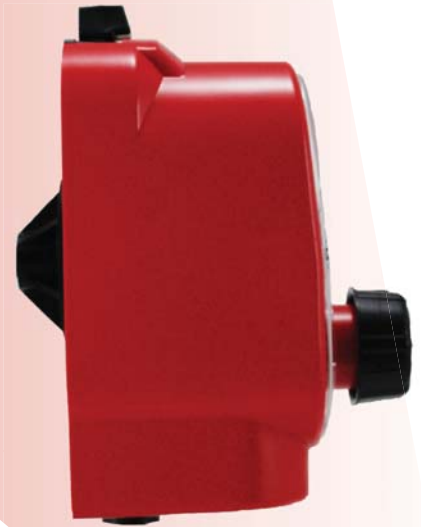
Purple



Pink



Lt. Blue



Red

Additional colors are available for an additional charge.
Please contact inside sales at 866-549-6446, Option 1

Ordering Matrix - Intermittent Suction Unit

87 XX - XXXX - 9 XX

Push-To-Set™ Series

Adapter (vacuum source connection)

No Adapter with 1/8" NPT Female	00
Ohio Diamond	01
DISS Hand-I-Twist (HIT)	02
DISS Nut & Gland	03
Schrader	04
Chemetron Rectangle Striker (NCG)	05
Puritan-Bennett	07
O.E.S. Twist	08
O.E.S. MedStar	09
90° Tubing Nipple	11

Fittings (patient connection)

No Fitting 1/8" NPT Female	00
Tubing Nipple	01
Locking Gland	04
Locking Gland & Overflow Safety Trap	05
DISS Male	07
DISS Male & Overflow Safety Trap, DISS Wing Nut & Gland	08
Pole Mount Bracket with Locking Gland & Overflow Safety Trap	28
Pole Mount Bracket with Tubing Nipple	29

Vacuum Regulator Type

Analog:

Intermittent Suction Unit	*1251
Pediatric Intermittent Suction Unit	1271
Neonatal Intermittent Suction Unit	1279

Digital:

Intermittent Suction Unit	1351
Pediatric Intermittent Suction Unit	1371
Neonatal Intermittent Suction Unit	1372

*MR Conditional

Digital PTS Regulators	Yellow	Blue	Pink	Red	Lt. Blue	Purple
Intermittent Suction Unit	1451	1551	1651	1751	1851	1951
Intermittent Suction Unit/Pediatric	1471	1571	1671	1771	1871	1971
Intermittent Suction Unit/Neonatal	1472	1572	1672	1772	1872	1972

Overflow Safety Traps and Filters

Overflow Safety Traps



Overflow Safety Trap with Locking Gland
6700-0365-901



Overflow Safety Trap with Hand-I-Twist (HIT)
6702-0365-901




Overflow Safety Trap with DISS Wing Nut & Gland
6703-0365-901



Overflow Safety Trap with DISS Male Adapter
6714-0365-901


Filters



Tubing x Tubing nipple

Package of 10
Package of 50

6730-0571-800
6730-0572-800



1/8" NPT Threaded x Tubing nipple

Package of 10
Package of 50

6730-0581-800
6730-0582-800

Ordering Matrix - Continuous Vacuum Regulator

87 XX - XXXX - 9 XX

Push-To-Set™ Series

Adapter (vacuum source connection)

No Adapter with 1/8" NPT Female	00
Ohio Diamond	01
DISS Hand-I-Twist (HIT)	02
DISS Nut & Gland	03
Schrader	04
Chemetron Rectangle Striker (NCG)	05
Puritan-Bennett	07
O.E.S. Twist	08
O.E.S. MedStar	09
90° Tubing Nipple	11

Fittings (patient connection)

No Fitting 1/8" NPT Female	00
Tubing Nipple	01
Locking Gland	04
Locking Gland & Overflow Safety Trap	05
DISS Male	07
DISS Male & Overflow Safety Trap, DISS Wing Nut & Gland	08
Pole Mount Bracket with Locking Gland & Overflow Safety Trap	28
Pole Mount Bracket with Tubing Nipple	29

Vacuum Regulator Type

<u>Analog:</u>	
3-Mode Continuous Vacuum Regulator	*1224
2-Mode Continuous Vacuum Regulator	*1225
3-Mode High Continuous Vacuum Regulator	*1226
2-Mode High Continuous Vacuum Regulator	*1330
2-Mode Neonatal Continuous Vacuum Regulator	1231
2-Mode Pediatric Continuous Vacuum Regulator	1234
<u>Digital:</u>	
3-Mode Continuous Vacuum Regulator	1324
2-Mode Continuous Vacuum Regulator	1325
3-Mode High Continuous Vacuum Regulator	1326
2-Mode High Continuous Vacuum Regulator	1430
2-Mode Neonatal Continuous Vacuum Regulator	1431
2-Mode Pediatric Continuous Vacuum Regulator	1434

*MR Conditional

Digital PTS Regulators	Yellow	Blue	Pink	Red	Lt. Blue	Purple
3-Mode Standard CVR	1424	1524	1624	1724	1824	1924
3-Mode High CVR	1426	1526	1626	1726	1826	1926
2-Mode Standard CVR	1425	1525	1625	1725	1825	1925
2-Mode High CVR	1530	1630	1730	1830	1930	2030
2-Mode NEO(0-100mmHg) CVR	1431	1531	1631	1731	1831	1931
2-Mode PED (0-160mmHg) CVR	1434	1534	1634	1734	1834	1934



Medical Corporation®

always there | for life

Suction & Oxygen Therapy Devices
 Portable Suction Machines
 Medical Gas Pipeline Equipment
 Vacuum & Air Compressor Packages and Accessories

Ask about our clinical excellence program

Avoiding the Hazards of Inadvertent Administration of High Suction Pressures

Doug Pursely M.Ed., RRT
 Dan Calahan MBA, BSRT, RRT
 Dennis Cook BSRT, RRT

Nasogastric Training
 Tracheal Training
 View Both

Ohio Medical Corporation® always there | for life clinical excellence program

Part 1: Clinical Animation Video
 “Avoiding the hazards of inadvertent administration of high suction pressures”

Part 2: Clinical Video
 Understanding the Hazards of oversuctioning

Both videos can be viewed on our website: www.ohiomedical.com

Vacuum Regulators - Quick Reference Chart				
Type of Regulator	Model Type	Adult	Pediatric	Neonatal
Push-To-Set™ Intermittent Suction Unit (Analog)		X	X	X
Push-To-Set™ Continuous Vacuum Regulator (Analog)		X	X	X
Push-To-Set™ Intermittent Suction Unit (Digital)		X	X	X
Push-To-Set™ Continuous Vacuum Regulator (Digital)		X	X	X
Intermittent Suction Unit (Analog)		X	X	
Continuous Vacuum Regulator (Analog)		X	X	
Thoracic Vacuum Regulator (Analog)		X		
Surgical/Free-Flow Vacuum Regulator (Analog)		X		

1111 Lakeside Drive, Gurnee, IL 60031
 866-549-6446 - Fax: 847-855-6218
www.ohiomedical.com

