

# Color LCD Touch Screen Control Panel (General Information)



The Ohio Medical Color LCD Touch Screen Control Panel offers quick and easy set-up as well as crystal clear monitoring of medical system conditions. A user defined password leads the system operator through all necessary set-up procedures.

## Features and Benefits

### Color LCD Touch Screen

- Crystal clear identification of gases and alarm conditions via a vivid 5.7" color LCD touch screen (10" LCD display optional)
- Screen brightness is field adjustable for enhanced visibility in all lighting conditions
- Highly reliable - pressure activated touch-screen
- Easy set-up - No push buttons or hidden toggle switches to mess with, allowing for quick and easy set-up via the front touch screen panel

### UL 508A Certified

### Meets NFPA® 99 Health Care Facilities Code

### Connection to Building Management Systems (BMS) via Dry Contacts

- Dry contacts identify alarm conditions for high temperature, lag, high dew point and carbon monoxide (CO) gas status

### Modbus Communications

- Modbus communications include alarm conditions for: system pressure, dew point, and CO gas status
- Optional communication protocols include Ethernet and BacNet

### User Defined, Password Protected Options

- English or Spanish
- Security – individual set-up and maintenance screen passwords protect user/installer settings
- Date and time settings
- System pressure settings for Lead/Lag functions
- Pump alternation time

### Maintenance Menu & Alerts

- Streamlined Maintenance Menu listing replacement items and maintenance durations
- Visual maintenance warnings (flashing red/white) when items are past due for service

## System Status / Settings

### System Status

- Alarm conditions clearly identified via audible and visual indicators
- Easy monitoring of system pressure (PSIG), Dew Point (°F) and CO concentration (PPM)
- Battery life with indicator
- CO, Dew Point and pressure tracking over time (Trending Capabilities)
- System operational status and accumulated run-time monitoring

### System Settings

- Adjustable start and stop pressure (lead and lag) minimum run time (MRT), and alternation time

### Input / Output Status

- Monitoring of inputs/outputs for troubleshooting purposes

### Alarm Status

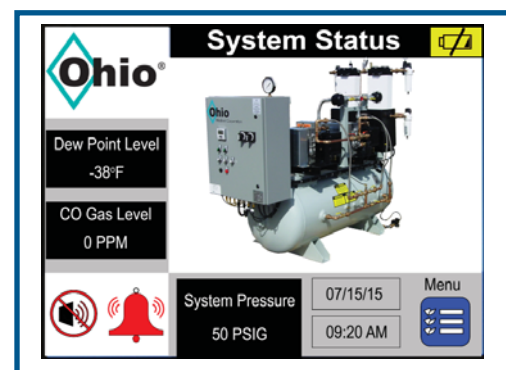
- Advanced alarm condition monitoring
- Easy access to the reset function to deactivate an alarm and return to normal condition once the condition is corrected

### Alarm History

- Alarm log with dates and times

### Information

- Easy access to system information: Model Number, Sales Order Number, Program Name and Shipping Date



© 2017 Ohio Medical, LLC. All rights reserved.

This document contains information that is proprietary and confidential to Ohio Medical, LLC. Use of this information is under license from Ohio Medical, LLC. Any use other than that authorized by Ohio Medical, LLC is prohibited. Ohio Medical and the Ohio Medical logo are registered trademarks of Ohio Medical, LLC. NFPA is a registered trademark of the National Fire Protection Association.