

Push-To-Set™ Vacuum Regulator

Our family of vacuum regulators come with the durable, time tested, quality design hospitals have come to know and depend on.

TOP MOUNTED ON/OFF SWITCH

For ease of use

CLEAR MARKINGS

Shows what mode the unit is in

DIGITAL ACCURACY

For greater safety (+/- 1% of full scale)

PATENTED PUSH-TO-SET™

Built-in feature eliminates the need to occlude patient tubing to set accurate vacuum levels

QUICK-TO-MAX

Only takes two turns from zero to full wall vacuum

STAT SET-UP

Intermittent mode starts with the "ON" Cycle – NO waiting!

ERGONOMIC, SLEEK DESIGN

FULLY ADJUSTABLE TIMING CYCLES

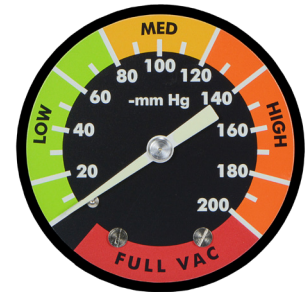
preset to: 15 seconds ON / 8 seconds OFF
(intermittent model only)

COLOR OPTIONS



ALSO AVAILABLE IN ANALOG

Accuracy +/- 3% of full scale



GLOW-IN-THE-DARK GAUGE

provides visibility in low-light situations

Available in Continuous and Intermittent Models.

ORDERING MATRIX

Push-To-Set™ Vacuum Regulator

87 XX - XXXX - 9 XX

ADAPTER (VACUUM SOURCE CONNECTION)		
	00	No Adapter, 1/8" NPT Female
	01	Diamond
	02	DISS Hand-I-Twist (HIT)
	03	DISS Nut & Gland
	04	Schrader®
	05	Chemetron® Rectangle Striker (NCG)
	07	Puritan Bennett®
	08	Oxequip®
	09	MedStar®
	11	90° Tubing Nipple

FITTINGS (PATIENT CONNECTION)		
	00	No Fitting, 1/8" NPT Female
	01	Tubing Nipple
	04	Locking Gland
	05	Locking Gland & Overflow Safety Trap
	07	DISS Male
	08	DISS Male & Overflow Safety Trap
	28	Pole Mount Bracket with Locking Gland & Overflow Safety Trap
	29	Pole Mount Bracket with Tubing Nipple

		PTS INTERMITTENT (ISU)	OFF WHITE	YELLOW	BLUE	PINK	RED	LIGHT BLUE	PURPLE
ANALOG	Adult Intermittent Suction Unit	1251	Y251	B251	K251	R251	L251	U251	
	Pediatric Intermittent Suction Unit	1271	Y271	B271	K271	R271	L271	U271	
	Neonatal Intermittent Suction Unit	1279	Y279	B279	K279	R279	L279	U279	
DIGITAL	Adult Intermittent Suction Unit	1351	1451	1551	1651	1751	1851	1951	
	Pediatric Intermittent Suction Unit	1371	1471	1571	1671	1771	1871	1971	
	Neonatal Intermittent Suction Unit	1372	1472	1572	1672	1772	1872	1972	
		PTS CONTINUOUS (CVR)	OFF WHITE	YELLOW	BLUE	PINK	RED	LIGHT BLUE	PURPLE
ANALOG	3-Mode Standard Continuous Unit	1224	Y224	B224	K224	R224	L224	U224	
	3-Mode High Continuous Unit	1226	Y226	B226	K226	R226	L226	U226	
	2-Mode Standard Continuous Unit	1225	Y225	B225	K225	R225	L225	U225	
	2-Mode High Continuous Unit	1330	Y330	B330	K330	R330	L330	U330	
	2-Mode Pediatric Continuous Unit	1234	Y234	B234	K234	R234	L234	U234	
	2-Mode Neonatal Continuous Unit	1231	Y231	B231	K231	R231	L231	U231	
	2-Mode C.A.S.S. Continuous Unit	1227	Y227	B227	K227	R227	L227	U227	
DIGITAL	3-Mode Standard Continuous Unit	1324	1424	1524	1624	1724	1824	1924	
	3-Mode High Continuous Unit	1326	1426	1526	1626	1726	1826	1926	
	2-Mode Standard Continuous Unit	1325	1425	1525	1625	1725	1825	1925	
	2-Mode High Continuous Unit	1430	1530	1630	1730	1830	1930	2030	
	2-Mode Pediatric Continuous Unit	1334	1434	1534	1634	1734	1834	1934	
	2-Mode Neonatal Continuous Unit	1331	1431	1531	1631	1731	1831	1931	

©2017 Ohio Medical, LLC. This document contains information that is proprietary and confidential to Ohio Medical, LLC. Use of this information is under license from Ohio Medical, LLC. Any use other than that authorized by Ohio Medical, LLC is prohibited. Ohio Medical and the Ohio Medical logo are registered trademarks of Ohio Medical, LLC. Chemetron, Oxequip and MedStar are registered trademarks of Allied Healthcare Products, Inc. Ohmeda is a registered trademark of GE Healthcare Finland OY Corporation. Puritan Bennett is a registered trademark of Covidien LP. Schrader is a registered trademark of Schrader-Bridgeport International, Inc.